



TECHNOLOGY
ENHANCED
**ENGLISH
LANGUAGE
SCHOOL**

www.flireland.com

Implementing socially distanced learning in our ELT classrooms this summer

by Peter Lahiff



Different
Innovative
Exciting

Who am I and where am I coming from



Peter Lahiff
Academic Director
Future Learning

@lahiffp
@flireland

Who I am ...

Course designer,
Teacher trainer
Academic manager
20+ years in ELT

Founding Academic Director of Future Learning



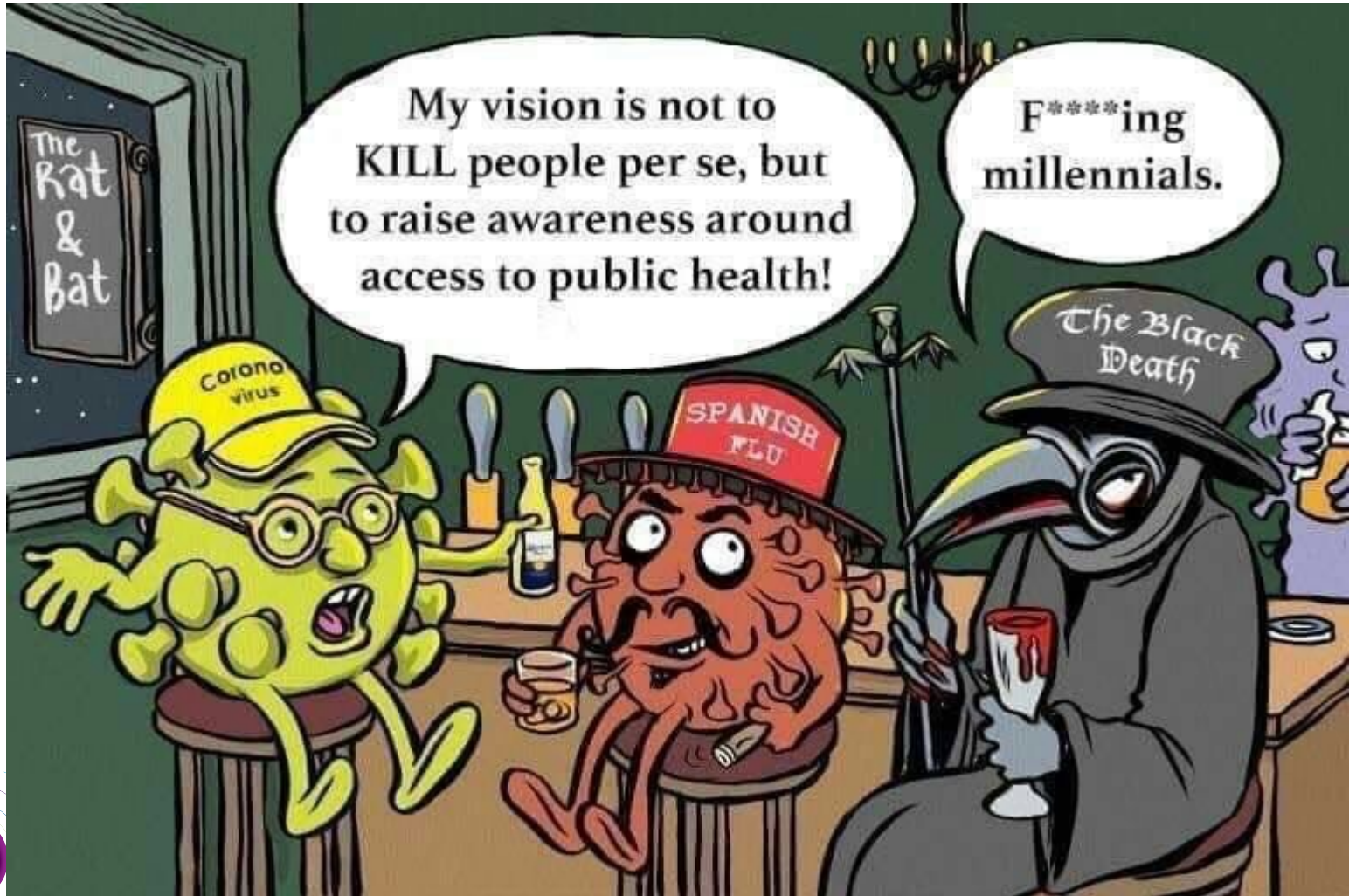
Work on the development and management of technology enhanced summer language courses for young learners from all around the world.

PROJECT BASED LEARNING WITH TECHNOLOGY

FL's project based lessons aim to develop students' communication skills in English and promote cultural awareness, while enhancing teamwork, leadership and the purposeful use of technology



The Millennial Virus

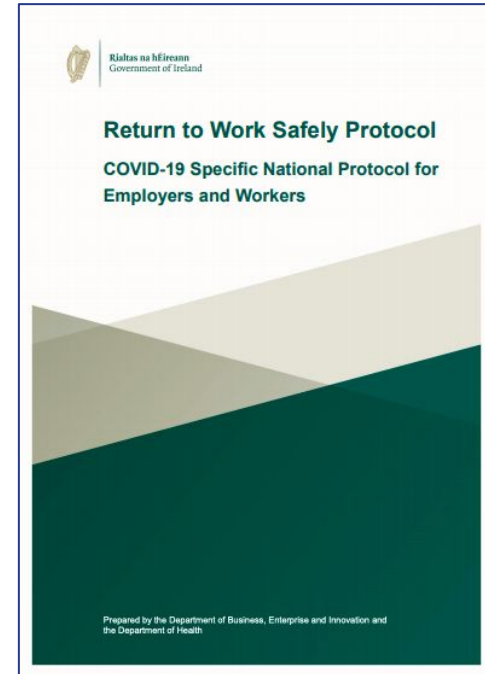


What is two metres?



Measures before return to the building:

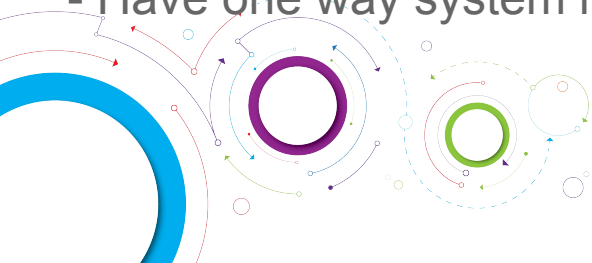
- Minimise risk of legionella in stagnant water / cooling system
(Do we need to assess our ventilation systems)
 - Pre-return questionnaires for all staff (and students?)
 - Inductions for all in the new procedures
 - Lead representative for staff (and students?)
 - Get equipment for doing temp checks and train first aiders
 - Identify Isolation area; closed door, near exit easily cleaned
 - Have a contacts log for all in the building (NB Cleaner of your work space is also considered a contact. (Does this extend to the contacts' contacts what about students working on frontline or living in crowded conditions - Is there a limit?)
 - Review illness procedures (staff and students) - Have school medical contact?
- Advice on how to get a test, when can they come back?



Return to work protocol - 8th May 2020

On an ongoing basis after re-opening

- Make Temperature Testing available on site with training to use it. (No records kept, but who can be told?, who does, when, with PPE?, is it just for show)
- Use isolation areas with closed doors if anyone reports symptoms and have an isolation route to this area (no one should be in corridors) and procedures to send home or to hospital ASAP (who collects them? Avoid public transport?)
- Make face coverings and hand wash on arrival a condition of entry to the building (Training on use of “masks”. Not to be shared)
- Have tissues and hand sanitizer at all entry points,
- Have disinfectant spray / wipes for the work area for visible cleaning of reception and classroom (e.g. sanitise desks and laptops).
- Staggered breaks for staff and students and limited numbers in canteen and study space.(will there be flexibility on scheduling rules from INIS)
- Have one way system in corridors and require “mask” wearing



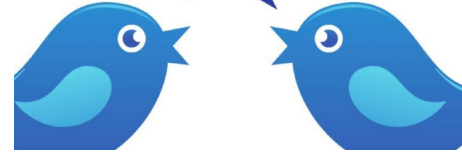
On an ongoing basis after re-opening (for how long)

- Continue to do admin work from home. (Will INIS allow blended courses?)
- Clean and sanitise the building twice a day
- Have bins emptied daily - review placement of them = Sealed bins for any PPE and specialised collection?
- No sharing of desks / workspaces (designated desk for students and staff and sanitise on AM > PM change over - what about dividing students into work pods).
- Keep at least 1m between desks (spaced pods for students and no sharing of equipment) - Training in techniques for spaced classroom management?
- Identify and ensure 2m distancing or solo working for vulnerable people if they can't work from home.
- Introduce contact tracing log for staff and students based on pre-return questionnaire; Who do they live, work and study closely with and contact details for those. (NB: GDPR Permission)



What about encouraging cycling?

Anything from online teaching you'd keep #ELTChinwaa



@sal_consoli - The efforts to get the community together ...

@LahiffP - Not having to do all the lesson tasks with the teacher looking on.

@LauraOGrady1 - Makes a big difference for learners who work better when the teacher is away from them.

@LahiffP - It has added some interesting new activity / interaction patterns to the repertoire

@thesawcebox - Accepting writing in digital format. Some people's handwriting!

@LahiffP - An appreciation of the limitation of a mobile phone for digital learning activities. You really need a laptop

@ChrisB95216897 - I've found it easier to collaborate with students online. You have access to shared docs and breakout rooms. TBL is, in some ways, more collaborative and engaging online. Admittedly, much to my surprise.

@LauraOGrady1 - It has been very difficult for teachers to maintain motivation with online groups. And it is a lot more work and planning than traditional teaching, we take a lot for granted when having access to a photocopier!

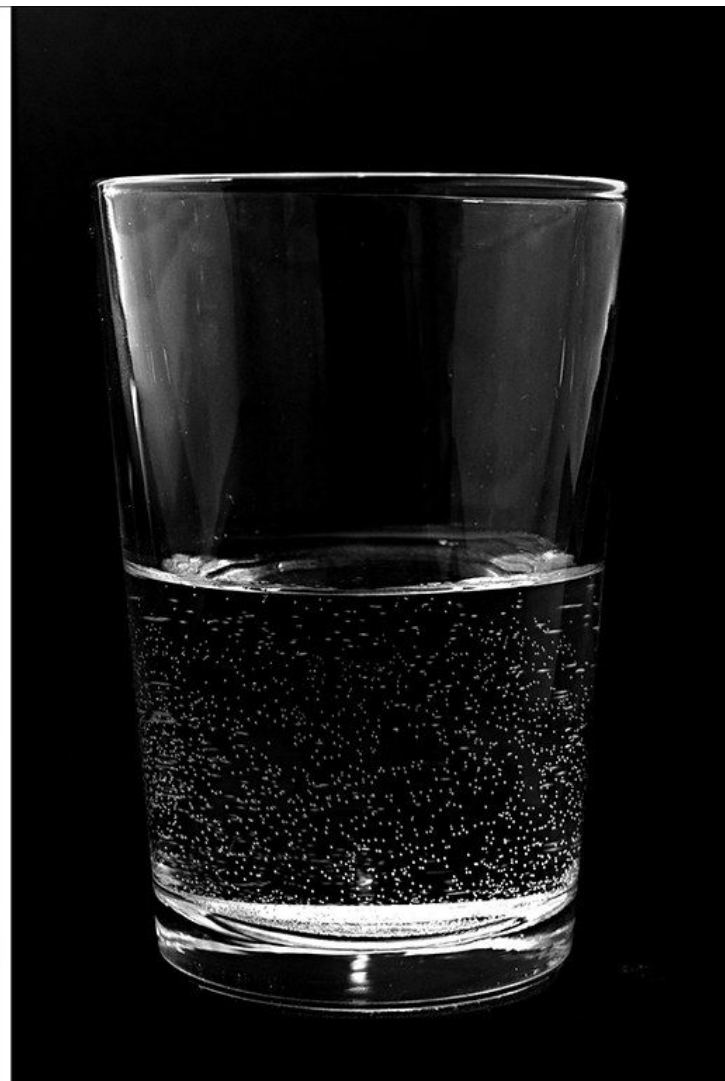
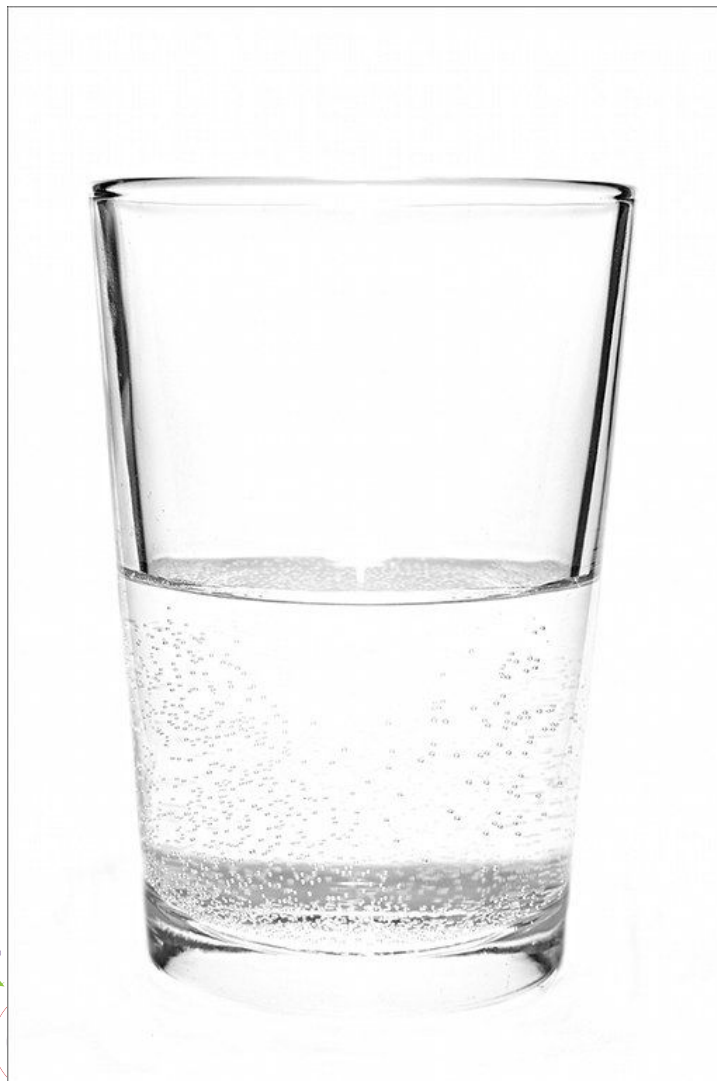
So which is it?



Thanks for
all your
attention!

@lahiffp

@flireland



Talk Description

Schools and teachers are wondering what reopening will look like when we reach the final phase of the government's COVID-19 roadmap in August. This talk will look at some of the proposals for managing social distancing in educational settings and will explore what I think they could mean in practice for English language teaching. These considerations are in anticipation of the department of education advice to schools which is due at the end of June and will tell which of the proposals considered will have to be implemented.

